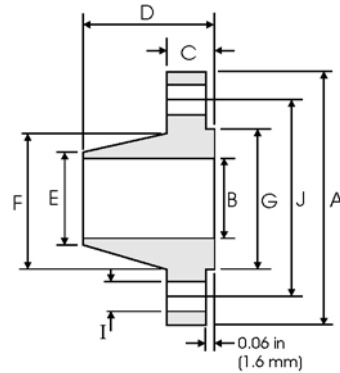




# Weld Neck Flanges - ANSI B16.5



## Class 300 lb

Nominal Pipe Size	Pipe		Flange Data				Hub Data		Raised Face	Drilling Data			Weight
		<b>A</b>	<b>B</b>	<b>C</b>	<b>D</b>	<b>E</b>	<b>F</b>	<b>G</b>	<b>H</b>	<b>I</b>	<b>J</b>		
	Outside Diameter	Overall Diameter	Inside Diameter	Flange Thickness min	Overall Length	Diameter at Weld Bevel	Hub Diameter	Face Diameter	Number of Holes	Bolt Hole Diameter	Diameter of Circle of Holes	kg/ piece	
in mm	in mm	in mm	in mm	in mm	in mm	in mm	in mm	in mm		in mm	in mm		
1/2	0.840	3.750	0.620	0.560	2.060	0.840	1.500	1.380	4	0.620	2.620	0.75	
	21.30	95.20	15.70	14.20	52.30	21.30	38.10	35.00		15.70	66.55		
3/4	1.050	4.620	0.820	0.620	2.250	1.050	1.880	1.690	4	0.750	3.250	1.26	
	26.70	117.3	20.80	15.70	57.15	26.70	47.70	42.90		19.00	82.50		
1	1.315	4.880	1.050	0.690	2.440	1.320	2.120	2.000	4	0.750	3.500	1.52	
	33.40	123.9	26.70	17.50	62.00	33.50	53.80	50.80		19.00	88.90		
1 1/4	1.660	5.250	1.380	0.750	2.560	1.660	2.500	2.500	4	0.750	3.880	2.03	
	42.20	133.3	35.10	19.00	65.00	42.20	63.50	63.50		19.00	98.50		
1 1/2	1.900	6.120	1.610	0.810	2.690	1.900	2.750	2.880	4	0.880	4.500	2.89	
	48.30	155.4	40.90	20.60	68.30	48.30	69.85	73.15		22.30	114.3		
2	2.375	6.500	2.070	0.880	2.750	2.380	3.310	3.620	8	0.750	5.000	3.40	
	60.30	165.1	52.60	22.30	69.85	60.45	84.00	91.90		19.00	127.0		
2 1/2	2.875	7.500	2.470	1.000	3.000	2.880	3.940	4.120	8	0.880	5.880	5.17	
	73.00	190.5	62.70	25.40	76.20	73.15	100.0	104.6		22.30	149.3		
3	3.500	8.250	3.070	1.120	3.120	3.500	4.620	5.000	8	0.880	6.620	6.93	
	88.90	209.5	78.00	28.40	79.25	88.90	117.3	127.0		22.30	168.1		
3 1/2	4.000	9.000	3.550	1.190	3.190	4.000	5.250	5.500	8	0.880	7.250	8.67	
	101.6	228.6	90.20	30.20	81.00	101.6	133.3	139.7		22.30	184.1		
4	4.500	10.00	4.030	1.250	3.380	4.500	5.750	6.190	8	0.880	7.880	11.2	
	114.3	254.0	102.4	31.70	85.80	114.3	146.0	157.2		22.30	200.1		
5	5.563	11.00	5.050	1.380	3.880	5.560	7.000	7.310	8	0.880	9.250	15.1	
	141.3	279.4	128.3	35.00	98.50	141.2	177.8	185.7		22.30	234.9		
6	6.625	12.50	6.070	1.440	3.880	6.630	8.120	8.500	12	0.880	10.62	19.1	
	168.3	317.5	154.2	36.50	98.50	168.4	206.2	215.9		22.30	269.7		
8	8.625	15.00	7.980	1.620	4.380	8.630	10.25	10.62	12	1.000	13.00	29.9	
	219.1	381.0	202.7	41.10	111.2	219.2	260.3	269.7		25.40	330.2		
10	10.75	17.50	10.02	1.880	4.620	10.75	12.62	12.75	16	1.120	15.25	42.7	
	273.0	444.5	254.5	47.70	117.3	273.0	320.5	323.8		28.40	387.3		
12	12.75	20.50	12.00	2.000	5.120	12.75	14.75	15.00	16	1.250	17.75	61.8	
	323.8	520.7	304.8	50.80	130.0	323.8	374.6	381.0		31.70	450.8		
14	14.00	23.00	To be specified by Purchaser	2.120	5.620	14.00	16.75	16.25	20	1.250	20.25	85.8	
	355.6	584.2		53.80	142.7	355.6	425.4	412.7		31.70	514.3		
16	16.00	25.50		2.250	5.750	16.00	19.00	18.50	20	1.380	22.50	106	
	406.4	647.7		57.15	146.0	406.4	482.6	469.9		35.00	571.5		
18	18.00	28.00		2.380	6.250	18.00	21.00	21.00	24	1.380	24.75	131	
	457.2	711.2		60.45	158.7	457.2	533.4	533.4		35.00	628.6		
20	20.00	30.50		2.500	6.380	20.00	23.12	23.00	24	1.380	27.00	158	
	508.0	774.7		63.50	162.0	508.0	587.2	584.2		35.00	685.8		
24	24.00	36.00		2.750	6.620	24.00	27.62	27.25	24	1.620	32.00	230	
	609.6	914.4		69.85	168.1	609.6	701.5	692.1		41.10	812.8		

### Notes

- Dimension B corresponds to the pipe inside diameter. Values quoted assume 40S/Standard wall thickness.
- Weights are based on manufacturer's data and are approximate.
- Flat face flanges may be provided at full thickness, C, or with raised face removed (the latter is nonstandard).
- For ring joint facings see page 8-6. For weld end bevel see page 8-5.
- For tolerances see page 8-4.